

90° Shoulder Mills



VSM490™-15

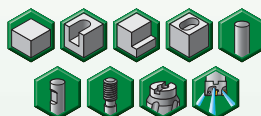
Max depth of cut: 15mm

Lead angle: 90°

Indexes per insert: 4

Diameter: 25–160mm

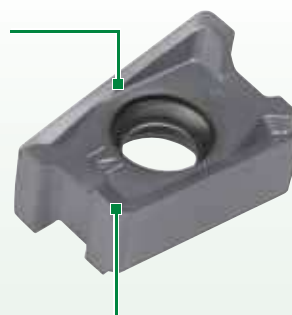
Pages: J32–J40



VSM490™-15 • Unbeatable Performance in Shoulder Milling

- “Stepless” solution.
- No mismatch when machining walls in different steps.

Innovative cutting geometry provides superior wall and surface finish.



Integrated wiper facet for excellent floor finishing.

Competitor Tool • Wall Quality



Traditional tools are designed to achieve a 90° wall, but exhibit poor performance when machining walls in multiple passes.

VSM490-15 • Wall Quality



VSM490-15 minimises the marks left. By increasing wall quality and avoiding a second tool, productivity increases significantly.