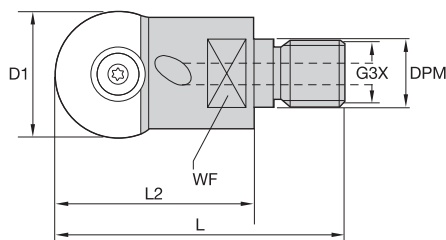


Copy Mills • M270™ Series

Ball Nose Tool Bodies



- Rough, semi-finishing, and finishing with one system.
- Through tool coolant.
- Secure and rigid insert clamping.



Ball Nose • Screw-On End Mills

order number	catalogue number	D1	DPM	G3X	L	L2	WF	Z	Z U	inserts	max RPM	coolant supply	kg
2243624	M270BD010M08	10	8,5	M8	42	25	10,0	1	2	M270B.10	57000	Yes	0,05
2243625	M270BD012M08	12	8,5	M8	42	25	10,0	1	2	M270B.12	55000	Yes	0,05
2243626	M270BD016M08	16	8,5	M8	47	30	10,0	1	2	M270B.16	53000	Yes	0,05
2243627	M270BD020M10	20	10,5	M10	59	40	14,0	1	2	M270B.20	52000	Yes	0,10
2243628	M270BD025M12	25	12,5	M12	72	50	19,0	1	2	M270B.25	50000	Yes	0,10
2243629	M270BD032M16	32	17,0	M16	73	50	22,0	1	2	M270B.32	46000	Yes	0,20

NOTE: ZU = Effective teeth.
Z = number of pocket seats.

Spare Parts



D1	insert screw	Nm	Torx driver
10	12748610500	2,0	12148788900
12	12748610600	2,0	12148788900
16	12748610700	5,0	12148099300
20	12748610800	5,0	12148099300
25	12748610900	7,0	12148086800
32	12748611000	7,0	12146006300

NOTE: All spare parts except the insert screws must be ordered separately.

Copy Mills